

# Clarino (Sib) 1

## FOLLIE DI DONNA

Walzer

Durata circa 18'33"

Amilcare Ponchielli (1834 - 1886) Op. 122

Versione storica a cura di Emiliano Gusperti

Andante moderato

1

(pp)

8

13

poco rall.

17

Walzer n° 1

pp

25

33

41

49

1. 2.

(mf)

57

(p) (mf) (p)

The image displays a musical score for two waltzes, 'Walzer n° 2' and 'Walzer n° 3'. The score is written for piano (p) and violin (v) parts. The piano part is in 3/4 time, and the violin part is in 3/4 time. The key signature is one flat (B-flat major or D minor). The score includes various musical notations such as trills (tr), dynamics (mf, ff, pp), repeat signs, and first/second endings. The waltzes are numbered 66, 74, 83, 90, 95, 100, 107, 116, 125, 132, and 139. The score ends with a section numbered 144-146.

**Walzer n° 2**

66 *tr* *(mf)* *(ff)* *tr*

74 *tr* *pp*

83 *(pp)*

90

95

100 *tr*

**Walzer n° 3**

107 *(p)*

116 *1.*

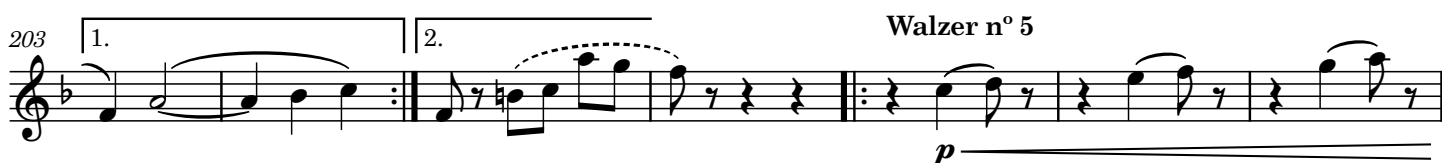
125 *tr* *pp*

132 *(mf)* *pp* *tr*

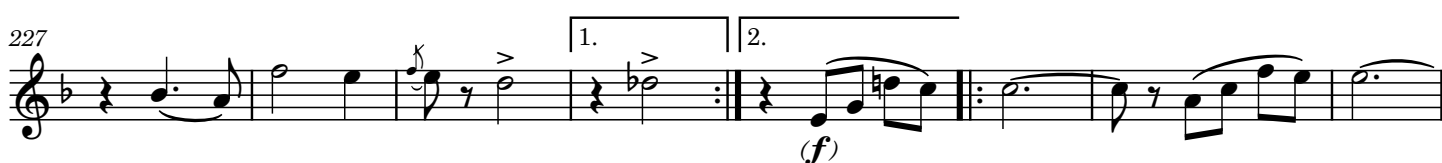
139 *(mf)* *1.* *2.* *3.*

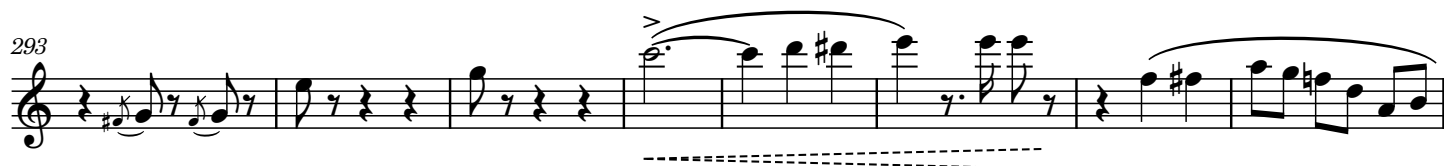
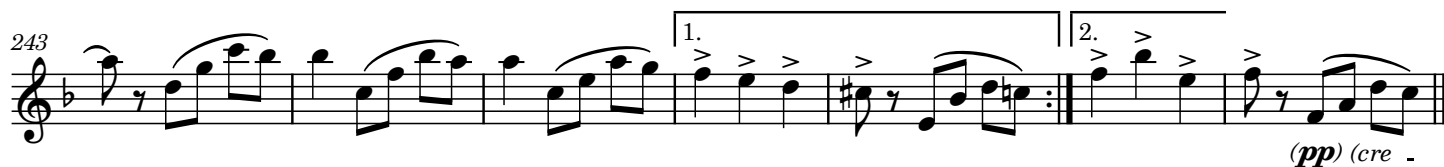
144-146

## Walzer n° 4

*scherzando*

## Walzer n° 5





318 *ff*

328 *pp*

335

340

345

351

359 *(cresc.)* *(stringendo)*

368 *ff*

374

379

386